

VersaCrane™ CC9600

DEEP SOUTH CRANE & RIGGING CO.

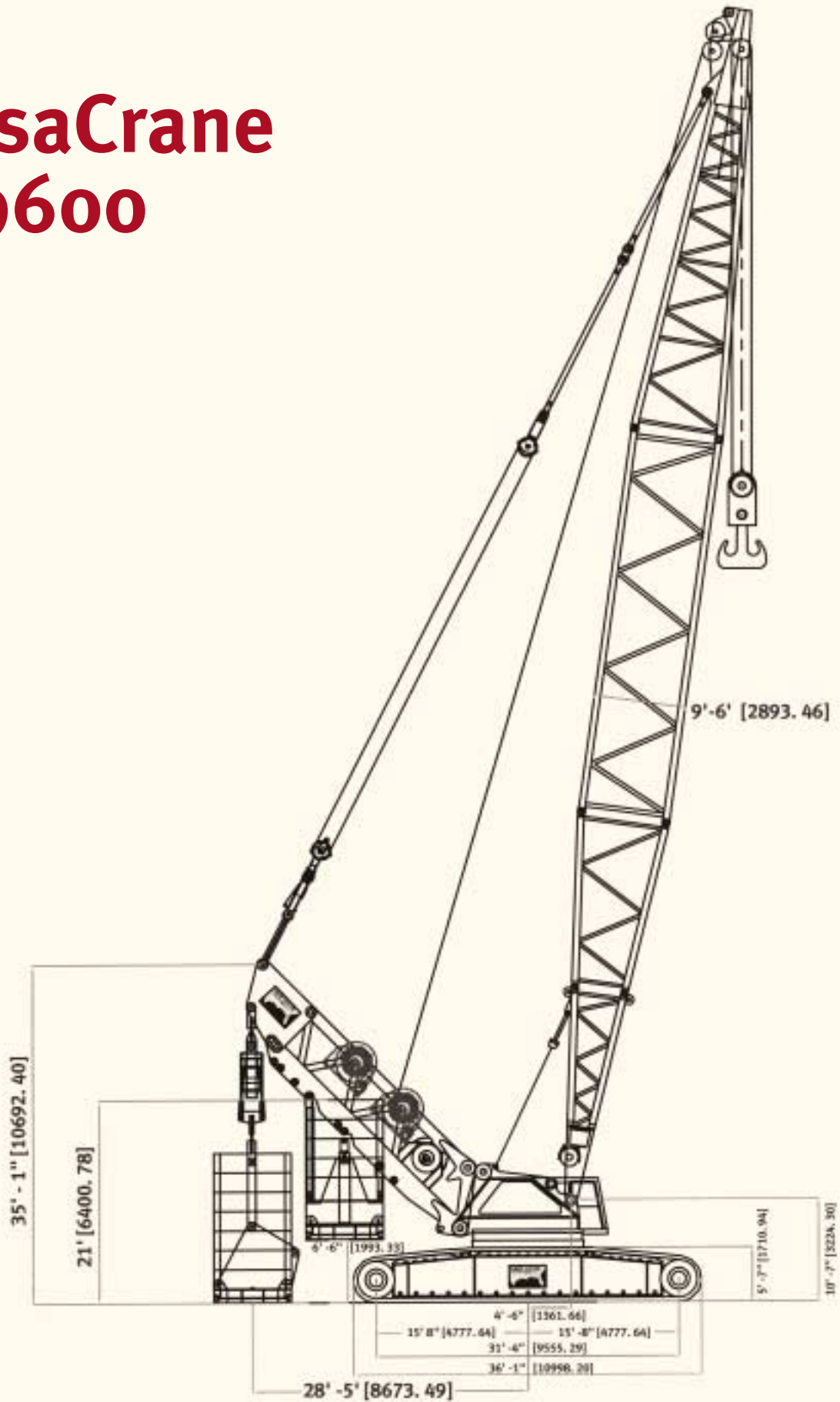


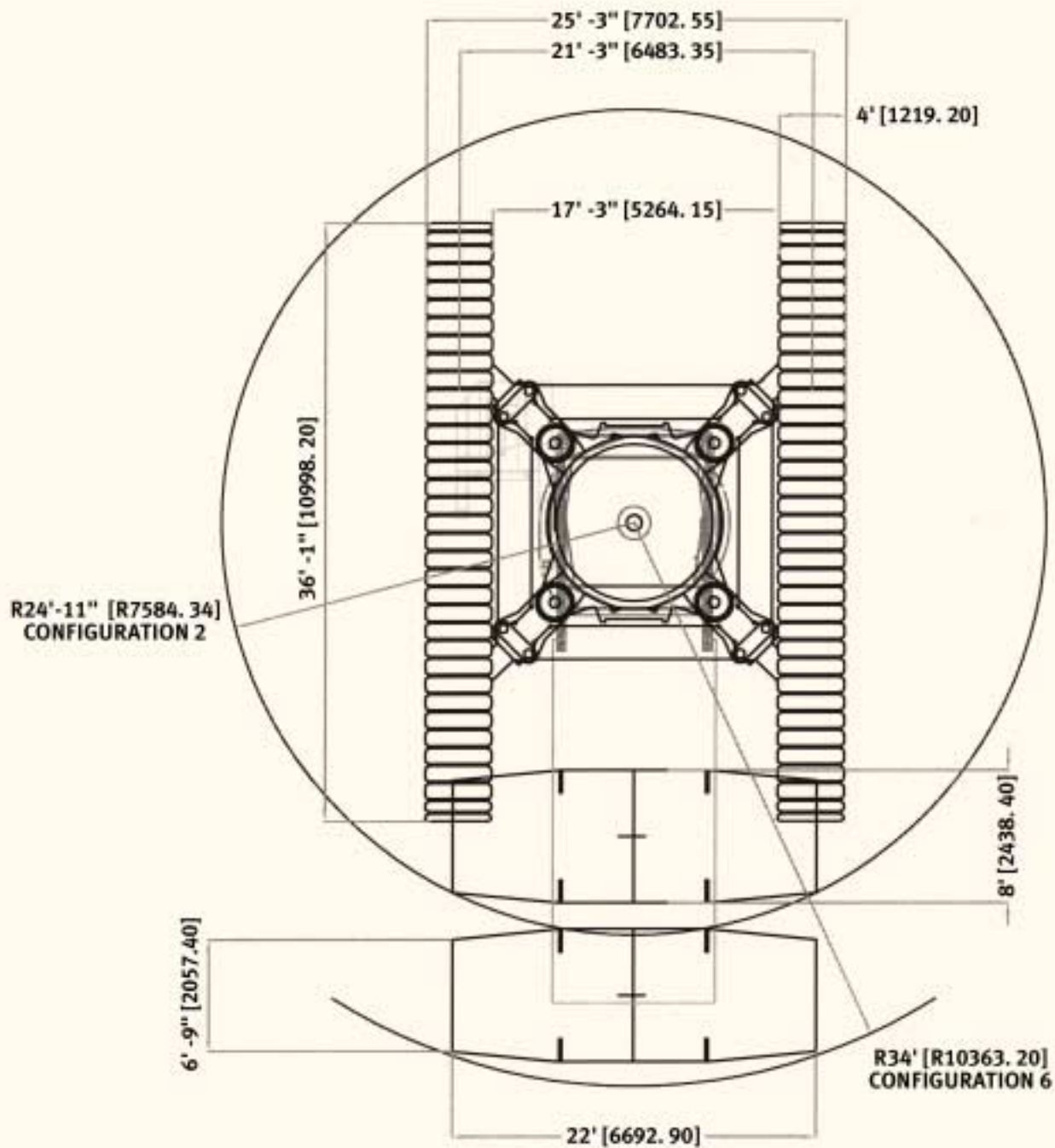
750 Ton
Crawler
Crane

LOAD CHARTS & SPECIFICATIONS

DIMENSIONS

VersaCrane CC9600





VersaCrane CC9600
Configuration II





CC9600-Versa-II

with boom V2BT-05-106x106R and stability of 75%

NOTE 1: Lifting distance may be limited by drum capacity always consult with Deep South Crane & Rigging

WARNING: DO NOT lower boom outside of Rating Chart Radius over side.

WARNING: Boom lengths with ** must be erected or lower over end only

Rated Radius (ft)	360° - Rated loads lifting off boom in tons *are structural limited loads								Rated Radius (ft)
	Lower CWT = 140 kips and Aux CWT = 0 kips Main CWT = 336 kips								
	Boom length								
	120 ft	140 ft	160 ft	180 ft	200 ft	220 ft	240 ft	260 ft**	
25	437.1	436.8							25
30	318.2	317.6	316.5	315.1					30
35	248.8	248.0	246.9	245.5	243.9	242.2			35
40	203.1	202.2	201.1	199.8	198.1	196.5	194.9		40
45	170.8	169.9	168.8	167.4	165.9	164.3	162.4	160.9	45
50	146.8	145.9	144.6	143.4	141.9	140.4	138.7	136.9	50
55	128.2	127.2	126.1	124.8	123.3	121.8	120.1	118.5	55
60	113.4	112.4	111.2	109.9	108.4	107.1	105.4	103.7	60
65	101.3	100.3	99.2	97.8	96.6	95.0	93.4	91.7	65
70	91.3	90.3	89.1	87.8	86.6	85.0	83.4	81.8	70
75	82.9	81.8	80.7	79.3	77.9	76.4	75.1	73.4	75
80	75.7	74.6	73.4	72.2	70.8	69.2	67.7	66.1	80
85	69.4	68.3	67.1	65.8	64.6	63.0	61.5	59.9	85
90	64.0	62.8	61.7	60.3	59.0	57.5	56.0	54.3	90
95	59.1	58.0	56.8	55.5	54.1	52.8	51.3	49.7	95
100	54.8	53.8	52.6	51.2	49.9	48.5	47.0	45.3	100
105	51.0	49.8	48.7	47.4	46.0	44.5	43.2	41.7	105
110	47.5	46.4	45.2	43.9	42.7	41.2	39.8	38.2	110
115	44.5	43.3	42.2	40.8	39.5	38.1	36.6	35.0	115
120	41.7	40.5	39.3	38.0	36.7	35.2	33.8	32.4	120
130		35.5	34.3	33.0	31.8	30.4	28.9	27.4	130
140		31.4	30.2	28.9	27.5	26.1	24.7	23.1	140
150			26.5	25.2	23.9	22.5	21.2	19.7	150
160			23.5	22.1	20.9	19.5	18.0	16.5	160
170				19.4	18.1	16.7	15.3	13.8	170
180				17.0	15.7	14.2	12.9	11.4	180
190					13.6	12.1	10.7	9.2	190
200					11.6	10.2	8.8	7.3	200
210						8.4	7.1		210
220						6.9			220

CC9600-Versa-II-2000.05.29.16.02.59-A-w-20



CC9600-Versa-II

with boom V2BT-05-106x106R and stability of 75%

NOTE 1: Lifting distance may be limited by drum capacity always consult with Deep South Crane & Rigging.

WARNING: DO NOT lower boom outside of Rating Chart Radius over side.

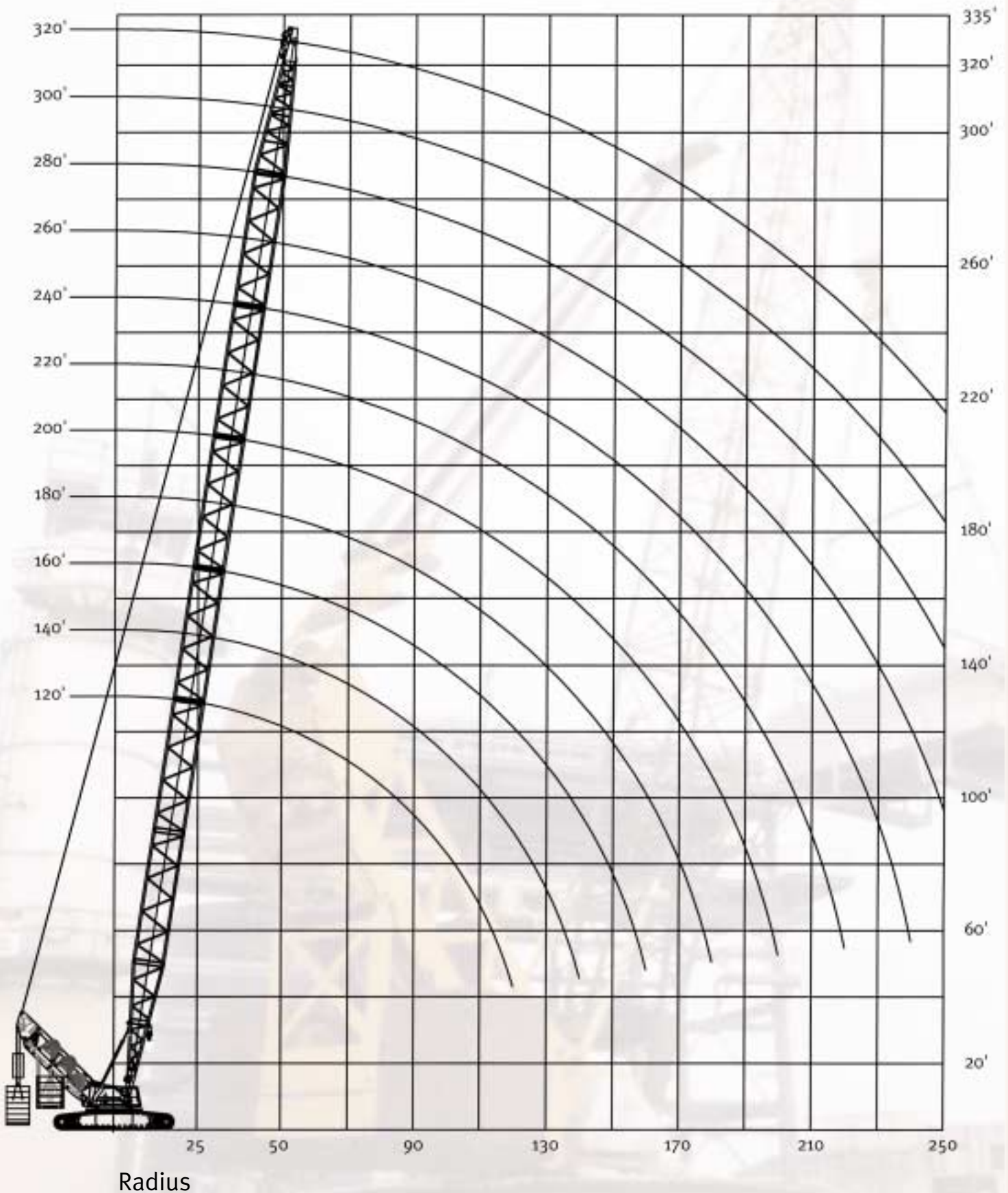
WARNING: Boom lengths with ** must be erected or lower over end only.

Rated Radius (ft)	360° - Rated loads lifting off boom in tons *are structural limited loads					Rated Radius (ft)
	Lower CWT = 140 kips and Aux CWT = 0 kips					
	Main CWT = 406 kips					
	Boom length					
	200 ft	220 ft	240 ft	260 ft	280 ft **	
35	275.0	273.2				35
40	224.0	222.4	220.4			40
45	187.9	186.2	184.4	182.8	180.7	45
50	161.1	159.6	157.8	155.9	154.0	50
55	140.4	138.9	137.1	135.4	133.4	55
60	123.8	122.2	120.6	119.0	117.2	60
65	110.3	108.7	107.2	105.6	103.8	65
70	99.1	97.6	96.1	94.4	92.7	70
75	89.7	88.1	86.5	85.1	83.3	75
80	81.6	80.1	78.5	76.8	75.4	80
85	74.7	73.2	71.6	70.0	68.3	85
90	68.5	66.9	65.4	64.0	62.3	90
95	63.2	61.7	60.2	58.5	56.9	95
100	58.3	56.8	55.3	53.9	52.3	100
105	54.2	52.7	51.2	49.6	48.0	105
110	50.2	48.8	47.2	45.7	44.1	110
115	46.7	45.2	43.8	42.3	40.8	115
120	43.5	42.2	40.8	39.2	37.6	120
130	38.0	36.6	35.2	33.6	32.2	130
140	33.3	32.0	30.6	29.0	27.5	140
150	29.4	28.0	26.5	25.0	23.5	150
160	25.9	24.5	23.0	21.5	20.1	160
170	22.8	21.5	20.1	18.6	17.1	170
180	20.2	18.8	17.4	15.9	14.4	180
190	17.8	16.4	15.0	13.5	12.0	190
200	15.7	14.2	12.9	11.4	9.9	200
210		12.3	10.9	9.4	7.9	210
220		10.6	9.1	7.7		220
230			7.6			230
240						240

CC9600-Versa-II-2000.05.29.16.03.27-A-w-20

Boom Length

Lifting Height



VersaCrane CC9600 • Working Ranges with 130x106 Boom

**VersaCrane CC9600
Configuration VI**





CC9600-Versa-VI

with boom V6BT-05-106x106R and stability of 75%

NOTE 1: Lifting distance may be limited by drum capacity always consult with Deep South Crane & Rigging

WARNING: DO NOT lower boom outside of Rating Chart Radius over side.

WARNING: Boom lengths with ** must be erected or lower over end only

Rated Radius (ft)	360° - Rated loads lifting off boom in tons *are structural limited loads									Rated Radius (ft)
	Lower CWT = 140 kips and Aux CWT = 12 kips									
	Main CWT = 336 kips				= 406					
	Boom length									
	120 ft	140 ft	160 ft	180 ft	200 ft	220 ft	240 ft	260 ft	280**	
25	450.5	450.0								25
30	328.0	327.4	326.2	325.0						30
35	256.5	255.8	254.6	253.2	282.6	281.1				35
40	209.6	208.6	207.4	206.1	230.4	228.6	226.9			40
45	176.4	175.4	174.2	173.0	193.5	191.9	190.0	188.1	186.0	45
50	151.8	150.8	149.6	148.2	165.9	164.2	162.4	160.9	158.9	50
55	132.6	131.5	130.4	129.1	144.6	143.0	141.2	139.7	137.8	55
60	117.4	116.3	115.2	113.8	127.8	126.2	124.4	122.7	120.8	60
65	105.0	103.9	102.8	101.4	113.8	112.3	110.7	108.9	107.3	65
70	94.7	93.6	92.4	91.1	102.3	100.8	99.2	97.5	95.9	70
75	86.0	84.9	83.8	82.4	92.7	91.2	89.6	87.8	86.3	75
80	78.5	77.3	76.2	75.0	84.4	82.9	81.3	79.7	77.9	80
85	72.1	70.9	69.8	68.4	77.2	75.8	74.2	72.7	70.9	85
90	66.4	65.2	64.2	62.8	70.9	69.4	67.9	66.2	64.8	90
95	61.5	60.3	59.2	57.8	65.3	64.1	62.5	60.9	59.2	95
100	57.1	55.9	54.8	53.5	60.5	59.0	57.5	55.9	54.3	100
105	53.2	52.0	50.8	49.5	56.1	54.6	53.3	51.7	50.0	105
110	49.7	48.5	47.2	45.9	52.2	50.8	49.3	47.7	46.1	110
115	46.5	45.2	44.0	42.8	48.7	47.2	45.7	44.1	42.7	115
120	43.5	42.3	41.2	39.8	45.3	43.8	42.5	41.0	39.5	120
130		37.2	36.0	34.7	39.8	38.3	36.8	35.2	33.7	130
140		33.0	31.8	30.5	34.9	33.5	32.2	30.6	29.1	140
150			28.0	26.7	30.9	29.5	28.0	26.5	25.0	150
160			24.9	23.5	27.3	25.9	24.4	22.9	21.5	160
170				20.8	24.1	22.7	21.4	19.9	18.4	170
180				18.2	21.5	20.0	18.6	17.1	15.6	180
190					19.0	17.5	16.1	14.6	13.2	190
200					16.8	15.4	13.9	12.4	11.0	200
210						13.4	12.0	10.5	9.0	210
220						11.6	10.2	8.7		220
230							8.6	7.1		230
240							7.2			240



CC9600-Versa-VI

with boom V6BT-05-106x106R and stability of 75%

NOTE 1: Lifting distance may be limited by drum capacity always consult with Deep South Crane & Rigging

WARNING: DO NOT lower boom outside of Rating Chart Radius over side.

WARNING: Boom lengths with ** must be erected or lower over end only

Rated Radius (ft)	360° - Rated loads lifting off boom in tons *are structural limited loads									Rated Radius (ft)
	Lower CWT = 140 kips and Aux CWT = 44 kips									
	Main CWT = 336 kips				= 406					
	Boom length									
	120 ft	140 ft	160 ft	180 ft	200 ft	220 ft	240 ft	260 ft	280**	
25	483.5	483.0								25
30	352.5	351.8	350.5	349.1						30
35	275.8	275.0	273.8	272.4	302.0	300.2				35
40	225.6	224.7	223.4	222.1	246.4	244.6	242.6			40
45	190.0	189.1	187.9	186.4	206.9	205.4	203.6	201.6	199.6	45
50	163.6	162.6	161.4	160.1	177.7	176.1	174.2	172.6	170.6	50
55	143.1	142.1	141.0	139.6	155.1	153.4	151.7	150.1	148.1	55
60	126.8	125.8	124.6	123.2	137.1	135.5	133.8	132.1	130.1	60
65	113.6	112.4	111.3	109.9	122.3	120.8	119.1	117.6	115.8	65
70	102.6	101.4	100.2	98.8	110.2	108.6	107.1	105.4	103.7	70
75	93.2	92.1	90.9	89.6	99.8	98.3	96.8	95.2	93.4	75
80	85.3	84.2	83.0	81.6	91.1	89.6	87.9	86.4	84.8	80
85	78.3	77.2	76.0	74.8	83.5	81.9	80.4	78.8	77.1	85
90	72.3	71.2	70.1	68.7	76.8	75.4	73.8	72.2	70.6	90
95	67.0	65.8	64.8	63.4	70.9	69.4	67.9	66.2	64.8	95
100	62.3	61.2	60.0	58.7	65.7	64.3	62.8	61.2	59.5	100
105	58.1	56.9	55.8	54.3	61.1	59.6	58.0	56.5	54.8	105
110	54.3	53.2	52.0	50.7	56.8	55.3	54.0	52.5	50.8	110
115	51.0	49.7	48.5	47.2	53.2	51.7	50.2	48.6	47.0	115
120	47.8	46.6	45.4	44.0	49.7	48.2	46.7	45.1	43.5	120
130		41.2	40.0	38.7	43.5	42.2	40.8	39.2	37.7	130
140		36.5	35.3	34.0	38.5	37.1	35.6	34.0	32.5	140
150			31.5	30.1	34.2	32.7	31.4	29.9	28.3	150
160			28.0	26.6	30.5	29.0	27.5	26.0	24.5	160
170				23.6	27.1	25.6	24.2	22.7	21.4	170
180				21.0	24.1	22.7	21.4	19.9	18.4	180
190					21.6	20.2	18.8	17.3	15.8	190
200					19.3	17.9	16.5	14.9	13.4	200
210						15.8	14.4	12.9	11.4	210
220						13.9	12.4	10.9	9.4	220
230							10.8	9.2	7.8	230
240							9.2	7.7		240
250										250



CC9600-Versa-VI

with boom V6BT-05-106x106R and stability of 75%

NOTE 1: Lifting distance may be limited by drum capacity always consult with Deep South Crane & Rigging

WARNING: DO NOT lower boom outside of Rating Chart Radius over side.

WARNING: Boom lengths with ** must be erected or lower over end only

Rated Radius (ft)	360° - Rated loads lifting off boom in tons *are structural limited loads										Rated Radius (ft)
	Lower CWT = 140 kips and Aux CWT = 160 kips										
	Main CWT = 336 kips					= 406					
	Boom length										
	120 ft	140 ft	160 ft	180 ft	200 ft	220 ft	240 ft	260 ft	280 ft	300 ft	
25	603.0	602.3									25
30	440.7	439.9	438.5	437.0							30
35	345.8	344.9	343.5	342.0	371.4	369.5					35
40	283.5	282.4	281.2	279.8	303.8	302.1	300.0				40
45	239.4	238.5	237.2	235.8	256.1	254.4	252.4	250.4	224.4*		45
50	206.6	205.7	204.4	203.0	220.6	218.8	216.9	215.2	213.1	184.6*	50
55	181.4	180.3	179.0	177.6	193.1	191.4	189.6	187.8	185.8	183.4*	55
60	161.2	160.1	158.9	157.4	171.2	169.6	167.9	166.0	164.1	162.1	60
65	144.8	143.6	142.4	140.9	153.3	151.6	150.1	148.4	146.5	144.6	65
70	131.1	130.0	128.8	127.3	138.6	137.0	135.3	133.6	131.7	129.8	70
75	119.5	118.4	117.2	115.8	126.1	124.4	122.8	121.1	119.2	117.7	75
80	109.7	108.4	107.3	105.9	115.3	113.8	112.2	110.4	108.7	107.1	80
85	101.2	99.9	98.7	97.4	106.2	104.6	102.9	101.2	99.5	97.8	85
90	93.7	92.5	91.3	89.9	97.9	96.6	94.9	93.3	91.6	89.8	90
95	87.1	85.9	84.8	83.3	90.8	89.3	87.7	86.2	84.6	82.8	95
100	81.3	80.1	78.8	77.4	84.6	83.1	81.5	79.8	78.2	76.4	100
105	76.1	74.9	73.7	72.3	78.8	77.3	75.8	74.3	72.7	70.9	105
110	71.4	70.2	68.9	67.6	73.8	72.3	70.8	69.2	67.6	65.8	110
115	67.2	65.9	64.8	63.4	69.2	67.7	66.2	64.8	63.1	61.4	115
120	63.4	62.1	60.9	59.5	64.9	63.6	62.1	60.5	58.9	57.2	120
130		55.3	54.2	52.8	57.7	56.2	54.7	53.3	51.7	50.0	130
140		49.7	48.5	47.0	51.6	50.1	48.6	47.0	45.5	43.8	140
150			43.5	42.2	46.2	44.8	43.2	41.9	40.3	38.7	150
160			39.4	38.0	41.8	40.2	38.8	37.2	35.7	34.1	160
170				34.2	37.7	36.2	34.8	33.2	31.9	30.3	170
180				31.0	34.1	32.7	31.4	29.8	28.3	26.7	180
190					31.0	29.6	28.1	26.6	25.1	23.5	190
200					28.2	26.8	25.3	23.8	22.3	20.9	200
210						24.2	22.8	21.4	19.9	18.4	210
220						22.0	20.6	19.0	17.6	16.0	220
230							18.5	17.0	15.5	13.9	230
240							16.6	15.1	13.6	12.1	240
250								13.4	11.9	10.3	250



CC9600-Versa-VI

with boom V6BT-05-106x106R and stability of 75%

NOTE 1: Lifting distance may be limited by drum capacity always consult with Deep South Crane & Rigging

WARNING: DO NOT lower boom outside of Rating Chart Radius over side.

WARNING: Boom lengths with ** must be erected or lower over end only

Rated Radius (ft)	360° - Rated loads lifting off boom in tons *are structural limited loads										Rated Radius (ft)
	Lower CWT = 140 kips and Aux CWT = 276 kips										
	Main CWT = 336 kips					= 406					
	Boom length										
	120 ft	140 ft	160 ft	180 ft	200 ft	220 ft	240 ft	260 ft	280 ft	300 ft	
25	666.2*	664.5*									25
30	529.0	528.0	526.5	524.2*							30
35	415.7	414.6	413.2	411.8	441.0	399.8*					35
40	341.4	340.3	338.9	337.4	361.4	359.5	331.7*				40
45	288.9	287.8	286.4	284.9	305.1	303.3	301.5	271.2*	224.4*		45
50	249.8	248.7	247.4	245.9	263.4	261.5	259.9	257.9	222.9*	184.6*	50
55	219.6	218.4	217.1	215.7	231.1	229.3	227.4	225.7	220.6*	183.4*	55
60	195.5	194.4	193.1	191.6	205.4	203.7	201.9	200.0	198.0	180.5*	60
65	175.9	174.7	173.5	172.1	184.2	182.8	181.0	179.1	177.2	175.2	65
70	159.6	158.4	157.1	155.7	166.9	165.2	163.5	161.9	160.0	158.1	70
75	145.9	144.6	143.4	141.9	152.1	150.6	148.9	147.7	145.4	143.4	75
80	134.1	132.9	131.6	130.1	139.6	138.1	136.4	134.6	132.8	130.9	80
85	123.9	122.7	121.4	119.9	128.8	127.2	125.5	123.8	122.0	120.2	85
90	115.1	113.8	112.6	111.1	119.1	117.7	116.1	114.3	112.6	110.8	90
95	107.2	106.0	104.8	103.3	110.8	109.2	107.8	106.1	104.3	102.6	95
100	100.2	99.0	97.7	96.4	103.4	101.8	100.2	98.5	97.1	95.3	100
105	94.1	92.8	91.6	90.1	96.8	95.2	93.7	92.0	90.3	88.6	105
110	88.5	87.2	86.0	84.6	90.7	89.2	87.6	86.2	84.4	82.8	110
115	83.5	82.2	80.9	79.5	85.4	83.8	82.3	80.7	79.0	77.2	115
120	78.9	77.6	76.3	74.9	80.4	78.8	77.3	75.7	74.2	72.6	120
130		69.6	68.3	66.8	71.8	70.3	68.8	67.2	65.6	64.1	130
140		62.8	61.5	60.1	64.7	63.1	61.6	60.0	58.5	56.8	140
150			55.7	54.2	58.3	56.8	55.3	53.9	52.3	50.7	150
160			50.8	49.3	53.0	51.5	50.0	48.5	46.9	45.3	160
170				44.9	48.2	46.8	45.3	43.7	42.3	40.8	170
180				41.1	44.1	42.7	41.2	39.7	38.2	36.5	180
190					40.5	39.0	37.5	36.0	34.5	32.8	190
200					37.2	35.7	34.2	32.7	31.3	29.7	200
210						32.7	31.4	29.8	28.3	26.7	210
220						30.1	28.6	27.1	25.6	24.0	220
230							26.2	24.6	23.1	21.5	230
240							24.0	22.4	21.0	19.5	240
250								20.5	19.0	17.4	250



CC9600-Versa-VI

with boom V6BT-05-106x106R and stability of 75%

NOTE 1: Lifting distance may be limited by drum capacity, always consult with Deep South Crane & Rigging.

WARNING: DO NOT lower boom outside of Rating Chart Radius over side.

WARNING: Boom lengths with ** must be erected or lower over end only.

Rated Radius (ft)	360° - Rated loads lifting off boom in tons *are structural limited loads											Rated Radius (ft)
	Lower CWT = 140 kips and Aux CWT = 392 kips											
	Main CWT = 336 kips					= 406 kips						
	Boom length											
	120 ft	140 ft	160 ft	180 ft	200 ft	220 ft	240 ft	260 ft	280 ft	300 ft	320 ft	
25	711.0*	686.2*										25
30	598.8*	597.0*	590.0*	524.2*								30
35	485.7	484.5	483.0	481.2	449.6*	399.8*						35
40	399.4	398.1	396.7	395.0	419.0	387.6*	331.7*					40
45	338.3	337.0	335.8	334.1	354.4	352.5	329.7*	271.2*	224.4*			45
50	293.0	291.8	290.4	288.8	306.2	304.4	302.5	269.0*	222.9*	184.6*	153.9*	50
55	257.9	256.6	255.2	253.7	269.1	267.3	265.4	263.4	220.6*	183.4*	152.2*	55
60	229.9	228.6	227.4	225.9	239.4	237.8	235.9	234.0	219.6*	180.5*	151.4*	60
65	207.1	205.9	204.6	203.1	215.4	213.6	211.8	209.9	207.9	179.1*	148.8*	65
70	188.1	186.9	185.6	184.2	195.1	193.6	191.9	190.0	188.1	178.4*	147.5*	70
75	172.2	170.9	169.6	168.1	178.3	176.6	174.9	173.1	171.4	169.5	145.4*	75
80	158.6	157.2	155.9	154.4	163.8	162.3	160.6	158.8	156.9	155.1	144.4*	80
85	146.8	145.4	144.1	142.6	151.4	149.8	148.1	146.3	144.5	142.6	140.7	85
90	136.4	135.1	133.8	132.4	140.4	138.9	137.1	135.4	133.6	131.8	129.9	90
95	127.3	126.1	124.8	123.2	130.7	129.2	127.6	125.8	124.1	122.3	120.4	95
100	119.3	118.0	116.7	115.2	122.2	120.6	119.1	117.4	115.7	113.9	112.1	100
105	112.1	110.7	109.4	108.1	114.6	112.9	111.3	109.7	108.2	106.4	104.6	105
110	105.6	104.2	102.9	101.5	107.8	106.2	104.6	102.9	101.2	99.4	97.7	110
115	99.8	98.3	97.2	95.7	101.4	99.8	98.2	96.8	95.1	93.3	91.6	115
120	94.5	93.1	91.8	90.3	95.8	94.3	92.7	91.1	89.4	87.7	86.2	120
130		83.8	82.4	81.0	86.0	84.4	82.9	81.2	79.6	77.9	76.2	130
140		76.0	74.7	73.2	77.6	76.0	74.6	73.0	71.4	69.7	68.0	140
150			67.9	66.4	70.4	68.9	67.4	65.8	64.4	62.7	61.0	150
160			62.2	60.6	64.3	62.8	61.3	59.7	58.1	56.5	54.8	160
170				55.5	58.8	57.3	55.8	54.2	52.8	51.2	49.6	170
180				51.1	54.2	52.7	51.2	49.6	48.0	46.4	44.8	180
190					49.9	48.3	46.9	45.3	43.8	42.3	40.8	190
200					46.2	44.5	43.2	41.7	40.1	38.5	36.9	200
210						41.2	39.8	38.2	36.7	35.0	33.5	210
220						38.2	36.7	35.1	33.5	32.2	30.6	220
230							33.9	32.4	30.9	29.3	27.8	230
240							31.5	29.9	28.4	26.8	25.2	240
250								27.5	26.0	24.4	22.9	250



CC9600-Versa-VI

with boom V6BT-05-106x106R and stability of 75%

NOTE 1: Lifting distance may be limited by drum capacity, always consult with Deep South Crane & Rigging.

WARNING: DO NOT lower boom outside of Rating Chart Radius over side.

WARNING: Boom lengths with ** must be erected or lower over end only.

Rated Radius (ft)	360° - Rated loads lifting off boom in tons *are structural limited loads											Rated Radius (ft)
	Lower CWT = 140 kips and Aux CWT = 508 kips											
	Main CWT = 336 kips					= 406 kips						
	Boom length											
	120 ft	140 ft	160 ft	180 ft	200 ft	220 ft	240 ft	260 ft	280 ft	300 ft	320 ft	
25	755.1*	686.2*										25
30	636.8*	635.0*	590.0*	524.2*								30
35	549.3*	547.6*	546.0*	505.1*	449.6*	399.8*						35
40	457.2	455.9	454.5	452.8	434.9*	387.6*	331.7*					40
45	387.8	386.5	385.0	383.3	403.4	375.7*	329.7*	271.2*	224.4*			45
50	336.1	334.8	333.4	331.7	349.0	347.1	325.8*	269.0*	222.9*	184.6*	153.9*	50
55	296.0	294.8	293.3	291.8	307.0	305.1	303.1	266.4*	220.6*	183.4*	152.2*	55
60	264.2	262.9	261.5	260.0	273.5	271.7	270.0	265.5*	219.6*	180.5*	151.4*	60
65	238.3	237.0	235.6	234.1	246.3	244.5	242.6	240.7	216.2*	179.1*	148.8*	65
70	216.8	215.4	214.1	212.5	223.6	221.9	220.1	218.1	214.6*	178.4*	147.5*	70
75	198.5	197.2	195.8	194.4	204.6	202.8	201.0	199.1	197.2	175.6*	145.4*	75
80	183.0	181.7	180.4	178.8	188.1	186.4	184.6	183.0	181.1	174.2*	144.4*	80
85	169.5	168.2	166.9	165.3	173.9	172.4	170.6	168.9	167.0	165.1	142.5*	85
90	157.8	156.4	155.1	153.6	161.6	160.0	158.3	156.5	154.7	152.8	141.4*	90
95	147.4	146.1	144.8	143.2	150.8	149.1	147.4	145.6	143.9	142.0	139.2*	95
100	138.2	136.9	135.6	134.1	140.9	139.4	137.8	136.1	134.3	132.4	130.6	100
105	130.1	128.7	127.3	125.9	132.4	130.7	129.2	127.5	125.8	123.9	122.2	105
110	122.7	121.2	119.9	118.6	124.6	123.0	121.3	119.7	118.1	116.3	114.6	110
115	116.1	114.6	113.3	111.8	117.7	116.0	114.4	112.7	111.0	109.2	107.7	115
120	105.6*	108.6	107.2	105.8	111.2	109.6	108.2	106.4	104.8	103.0	101.2	120
130		97.9	96.7	95.2	100.0	98.4	97.0	95.3	93.7	91.9	90.2	130
140		86.3*	87.7	86.2	90.6	89.0	87.4	86.0	84.3	82.7	80.9	140
150			80.1	78.5	82.6	81.0	79.4	77.8	76.2	74.7	73.1	150
160			71.6*	71.9	75.6	74.1	72.6	70.9	69.3	67.7	65.9	160
170				66.2	69.4	67.9	66.3	64.9	63.3	61.7	60.0	170
180				59.6*	64.2	62.5	61.0	59.5	57.9	56.2	54.6	180
190					59.3	57.8	56.2	54.7	53.2	51.6	50.0	190
200					51.3*	53.5	52.0	50.5	49.0	47.3	45.7	200
210						49.7	48.2	46.6	45.0	43.4	42.0	210
220						42.7*	44.7	43.2	41.7	40.1	38.5	220
230							41.7	40.0	38.5	36.9	35.3	230
240							35.3*	37.2	35.6	34.0	32.5	240
250								34.5	33.0	31.5	30.0	250



CC9600-Versa-VI

with boom V6BT-05-106x106R and stability of 75%

NOTE 1: Lifting distance may be limited by drum capacity, always consult with Deep South Crane & Rigging.

WARNING: DO NOT lower boom outside of Rating Chart Radius over side.

WARNING: Boom lengths with ** must be erected or lower over end only.

Rated Radius (ft)	360° - Rated loads lifting off boom in tons *are structural limited loads											Rated Radius (ft)
	Lower CWT = 140 kips and Aux CWT = 624 kips											
	Main CWT = 336 kips					= 406 kips						
	Boom length											
	120 ft	140 ft	160 ft	180 ft	200 ft	220 ft	240 ft	260 ft	280 ft	300 ft	320 ft	
25	755.1*	686.2*										25
30	674.7*	656.7*	590.0*	524.2*								30
35	582.2*	580.5*	562.2*	505.1*	449.6*	399.8*						35
40	511.5*	509.8*	508.1*	486.2*	434.9*	387.6*	331.7*					40
45	437.1	435.8	434.2	432.5	420.4*	375.7*	329.7*	271.2*	224.4*			45
50	379.2	377.9	376.3	374.6	391.9	364.5*	325.8*	269.0*	222.9*	184.6*	153.9*	50
55	334.3	333.0	331.5	329.8	345.0	343.1	316.6*	266.4*	220.6*	183.4*	152.2*	55
60	298.5	297.2	295.7	294.0	307.6	305.8	303.8	265.5*	219.6*	180.5*	151.4*	60
65	269.5	268.1	266.6	265.0	277.2	275.4	273.5	261.5*	216.2*	179.1*	148.8*	65
70	245.2	243.9	242.4	240.9	251.9	250.1	248.4	246.5	214.6*	178.4*	147.5*	70
75	224.9	223.5	222.1	220.5	230.6	228.8	227.1	225.2	211.9*	175.6*	145.4*	75
80	207.4	206.1	204.7	203.1	212.4	210.6	208.8	206.9	205.2	174.2*	144.4*	80
85	192.3	190.9	189.6	188.0	196.5	194.9	193.2	191.4	189.5	171.9*	142.5*	85
90	179.1	177.8	176.4	174.8	182.9	181.1	179.4	177.6	175.7	170.7*	141.4*	90
95	167.5	166.1	164.7	163.1	170.6	169.0	167.2	165.4	163.6	162.0	139.2*	95
100	157.2	155.8	154.4	152.9	159.9	158.2	156.5	154.8	152.9	151.3	138.2*	100
105	148.0	146.6	145.2	143.7	150.2	148.6	146.9	145.1	143.4	141.6	136.1*	105
110	138.1*	138.3	136.9	135.4	141.4	139.9	138.3	136.6	134.9	133.0	131.1	110
115	125.9*	130.8	129.5	128.0	133.6	132.0	130.4	128.9	127.1	125.3	123.5	115
120	112.9*	124.0	122.7	121.1	126.6	124.9	123.3	121.7	119.9	118.3	116.6	120
130		111.8*	110.8	109.2	114.2	112.6	110.9	109.2	107.8	106.0	104.2	130
140		92.6*	100.8	99.2	103.7	102.1	100.4	98.8	97.3	95.6	93.8	140
150			92.2*	90.7	94.7	93.1	91.5	89.8	88.2	86.5	85.0	150
160			77.1*	83.2	86.8	85.3	83.8	82.2	80.6	78.8	77.2	160
170				76.8	80.1	78.4	76.9	75.4	73.8	72.2	70.5	170
180				64.4*	74.1	72.5	71.0	69.3	67.8	66.1	64.7	180
190					66.2*	67.2	65.6	64.2	62.5	60.9	59.3	190
200					55.7*	62.5	61.0	59.3	57.8	56.1	54.5	200
210						55.6*	56.6	55.0	53.6	52.0	50.3	210
220						46.7*	52.8	51.2	49.7	48.0	46.5	220
230							46.8*	47.7	46.2	44.5	43.1	230
240							39.0*	44.5	43.0	41.5	39.8	240
250								38.9*	40.1	38.5	36.9	250



CC9600-Versa-VI

with boom V6BT-05-106x106R and stability of 75%

NOTE 1: Lifting distance may be limited by drum capacity, always consult with Deep South Crane & Rigging.

WARNING: DO NOT lower boom outside of Rating Chart Radius over side.

WARNING: Boom lengths with ** must be erected or lower over end only.

Rated Radius (ft)	360° - Rated loads lifting off boom in tons *are structural limited loads											Rated Radius (ft)
	Lower CWT = 140 kips and Aux CWT = 740 kips											
	Main CWT = 336 kips					= 406 kips						
	Boom length											
	120 ft	140 ft	160 ft	180 ft	200 ft	220 ft	240 ft	260 ft	280 ft	300 ft	320 ft	
25	755.1*	686.2*										25
30	712.7*	656.7*	590.0*	524.2*								30
35	615.2*	613.4*	562.2*	505.1*	449.6*	399.8*						35
40	540.5	538.9*	537.2*	486.2*	434.9*	387.6*	331.7*					40
45	481.7*	480.0*	478.4*	465.9*	420.4*	375.7*	329.7*	271.2*	224.4*			45
50	422.3	420.9	419.2	417.5	406.5*	364.5*	325.8*	269.0	222.9*	184.6*	153.9*	50
55	372.5	371.0	369.5	367.9	383.0	353.4*	316.6*	266.4*	220.6*	183.4*	152.2*	55
60	333.0	331.5	330.0	328.2	341.8	339.9	307.2*	265.5*	219.6*	180.5*	151.4*	60
65	300.6	299.2	297.7	296.0	308.2	306.3	297.6*	261.5*	216.2*	179.1*	148.8*	65
70	273.8	272.4	271.0	269.4	280.4	278.5	276.6	258.0*	214.6*	178.4*	147.5*	70
75	251.1	249.7	248.4	246.8	256.8	254.9	253.1	249.9*	211.9*	175.6*	145.4*	75
80	231.8	230.4	228.9	227.4	236.6	234.9	233.1	231.1	210.5*	174.2*	144.4*	80
85	215.1	213.7	212.2	210.6	219.1	217.4	215.8	213.9	207.4*	171.9*	142.5*	85
90	200.4	199.1	197.6	196.0	204.0	202.3	200.5	198.6	196.8	170.7*	141.4*	90
95	187.6	186.1	184.7	183.2	190.6	188.9	187.1	185.2	183.6	168.1*	139.2*	95
100	173.4*	174.7	173.4	171.9	178.6	176.9	175.2	173.4	171.8	166.9*	138.2*	100
105	159.8*	164.5	163.1	161.6	168.0	166.4	164.6	162.8	161.2	159.4	136.1*	105
110	146.8*	155.3	153.9	152.4	158.5	156.8	155.1	153.4	151.6	149.9	135.0*	110
115	133.9*	147.1	145.6	144.1	149.9	148.2	146.6	144.8	143.0	141.1	132.9*	115
120	120.2*	138.4*	138.1	136.6	141.9	140.4	138.8	137.0	135.2	133.4	130.6*	120
130		119.0*	124.9	123.4	128.3	126.7	125.0	123.3	121.6	119.8	118.2	130
140		98.8*	113.3*	112.3	116.7	115.1	113.4	111.8	110.1	108.3	106.8	140
150			98.4*	102.8	106.8	105.2	103.6	101.9	100.2	98.5	97.0	150
160			82.5*	94.1*	98.1	96.6	95.1	93.3	91.8	90.0	88.3	160
170				82.2*	90.7	89.0	87.4	85.9	84.3	82.7	80.9	170
180				69.3*	80.9*	82.4	80.9	79.2	77.7	75.9	74.5	180
190					71.1*	76.4*	75.1	73.4	71.9	70.2	68.6	190
200					60.0*	68.2*	69.8	68.2	66.6	64.9	63.5	200
210						60.0*	64.6*	63.5	62.0	60.3	58.7	210
220						50.6*	57.7*	59.2	57.7	56.0	54.4	220
230							50.8*	54.4*	53.9	52.2	50.7	230
240							42.7*	48.7*	50.3	48.7	47.1	240
250								42.7	45.8*	45.5	43.8	250

Transportation



DEEP SOUTH CRANE & RIGGING CO.

- **SAFETY** Our highest priority!
- **ENGINEERED SOLUTIONS**
- **SPECIALIZED SERVICES** in layout, design, and erection procedures
- **HIGHLY MOBILE FLEET**
 - Conventional: 140-2500 tons
 - Crawler: 275-750 tons
 - Hydraulic: 60-500 tons
- **RENTAL FLEET** Cherrypickers from
 - 6 tons-60 tons
 - Long or short term rentals Bare or M&O
- **TRANSPORTATION** Self-propelled hydraulic modular steering platforms
 - Over 70 lines available
- **COMPLETE RIGGING** Providing all craft disciplines necessary
- **SINGLE SOURCE** for all rigging, lifting, heavy hauling, and equipment



DEEP SOUTH CRANE & RIGGING Co.

DEEP SOUTH PROVIDES MORE
THAN JUST CRANES.

WE PROVIDE SOLUTIONS.

VersaCrane™
CC9600



2001 Rigging Job of the Year

15324 AIRLINE HIGHWAY
BATON ROUGE, LA 70817
TEL (225) 753-4371
FAX (225) 751-7700

3115 PETRO
SULPHUR, LA
70665
TEL (337) 882-6037
FAX (337) 882-6015

200 HOLMES ROAD
HOUSTON, TX
77045
TEL. (713) 721-1400
FAX (713) 726-1027

P.O. BOX 50785
MOBILE, AL
36605
TEL. (334) 473-3007
FAX (334) 476-0980